

Since 1898
CONSEW®

Model 389RB-2

TWO NEEDLE / WALKING FOOT

Needle Feed: Model 388RB-2

WITH

CENTRA-LUBE® - SEMI-AUTOMATIC LUBRICATION SYSTEM

LARGE VERTICAL AXIS ROTARY HOOKS AND BOBBINS

REVERSE FEED

SAFETY CLUTCH

WALKING FOOT

**DOUBLE
NEEDLE**



HEAVY DUTY

HIGH SPEED

POST TYPE

TWO NEEDLE

DROP FEED, NEEDLE FEED

WALKING FOOT

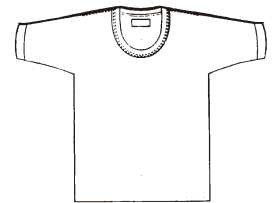
ALTERNATING PRESSER FEET

LOCKSTITCH MACHINE

Model 389RB-2

APPLICATIONS

- For sewing medium to medium heavy-weight fabrics, leather, canvas, vinyl synthetics and various coated and laminated materials
- Designed for stitching such products as overalls, raincoats, luggage, travelware accessories, bags, umbrellas, awnings, covers, tarpaulins, tents, wearing apparel, outdoor clothing, underwear, etc.
- General / parallel two-needle stitching
- Suitable for stitching uneven, hollow, tubular and curved articles
- Also for secondary operations on finished articles such as attaching braids, pockets, tapes, etc.



FEATURES



- Compound feed, walking foot mechanism assures perfect feeding of sewing material
- Large hooks and bobbin cases
- Centra-Lube® semi-automatic lubrication system
- Stitches per minute - 2400 *
- Reverse stitching
- Various gauge sets available
- Safety clutch protects the hooks from being damaged
- Models 389RBATCL(N) / 389RATCL(N) - automatic function
- Available in extra high post bed (special order)

SPECIFICATIONS

Speed, Max. (S.P.M.) *	2400 *
Clearance Under Foot	11/32" (8.5mm) hand 7/16" (11mm) foot
Needle Bar Stroke	1 5/16" (33mm)
Stitch Length, Max.	4.2 s.p.i. (6 mm)
Needle	135 x 17
Bobbin	Metal 10541
	Pre-wound U
Hook	14505
Bed Size	7" x 20 3/8" (177 mm x 518 mm)
Work Surface	2 1/8" x 4" (54 mm x 101 mm)
Post Height	7" (178 mm)
Stitch Type	301
Needle Gauges Available	3/16" to 1" (4.7 mm to 25.4 mm)

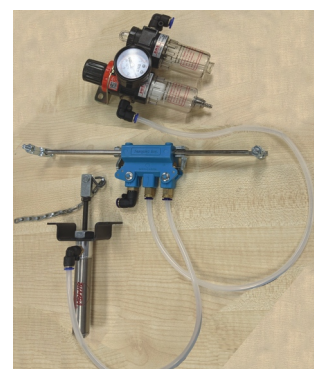
* Speed depends on operation, material and thread.

Available Option:
Adjustable, spring-loaded, retractable,
SWING ARM GUIDE.



CLINTON INDUSTRIES
"SERVING THE SEWING INDUSTRY SINCE 1954"

Optionally available from Clinton Industries:
Automatic Footlift and Automatic Backtack



FOOTLIFT



BACKTACK